



**FEE #: 2009 – 19134**

07/09/2009 02:05 PAGES: 0007  
FEES: .00 .00 .00 .00 .00  
REQ BY: YUMA CO BD OF SUPERVISOR  
REC BY: CRISTINA ACOSTA

**COPY**  
AS TC FILING DATA ONLY

Please return original document  
to the **Board of Supervisors Office**,  
**ATTENTION:** Ginger Hamilton @ 373-1104  
*(Name & phone number)*

**TYPE OF DOCUMENT:**

**RESOLUTION NO. 09-39**

**A RESOLUTION OF THE BOARD OF DIRECTORS  
FOR YUMA COUNTY IMPROVEMENT DISTRICT NO. 09-03  
(MARTINEZ LAKE RESORT UNIT NO. 1)  
ORDERING THE DISTRICT'S COVERSION TO A  
ROAD IMPROVEMENT AND MAINTENANCE DISTRICT AND  
APPOINTING INITIAL MEMBERS OF THE DISTRICT BOARD.**

**DOCUMENT APPROVAL:**

Approved by Yuma County Board of Supervisors:  
July 6, 2009, Agenda Item No. D1.



**IMPROVEMENT DISTRICT NO. 09-03 BOARD OF DIRECTORS  
(aka MARTINEZ LAKE RESORT UNIT NO. 1)  
RESOLUTION NO. 09-39**

**A RESOLUTION OF THE BOARD OF DIRECTORS FOR YUMA COUNTY IMPROVEMENT DISTRICT NO. 09-03 (MARTINEZ LAKE RESORT UNIT NO. 1) ORDERING THE DISTRICT'S CONVERSION TO A ROAD IMPROVEMENT AND MAINTENANCE DISTRICT AND APPOINTING INITIAL MEMBERS OF THE DISTRICT BOARD.**

**WHEREAS**, the Yuma County Improvement District No. 09-03 (Martinez Lake Resort Unit No. 1) ("District") was established by the Yuma County Board of Supervisors on June 15, 2009; and

**WHEREAS**, the Board of Directors of the District have ordered the District be converted to a Road Improvement and Maintenance District pursuant to A.R.S. §48-1088 to provide for the ongoing maintenance of the District's road system; and

**WHEREAS**, the board has conducted a public hearing and have heard comments regarding the aforementioned conversion, whereby notice of the hearing was mailed to the owners of the real property in the District as shown on the most recent property tax assessment roll; and

**NOW, THEREFORE, BE IT RESOLVED** that the Board of Directors of the Yuma County Improvement District No. 09-03 (Martinez Lake Resort Unit #1), Yuma County, Arizona hereby orders the District be converted to a Road Improvement and Maintenance District and have, pursuant to A.R.S. §48-1082, specified three members to serve on the board of directors of the district, and have appointed JOHN GUTH, Peggy Garrett, and James Castle to serve as the initial members of the board.

Adopted this 6<sup>th</sup> day of July, 2009.

\_\_\_\_\_  
GREGORY S. FERGUSON, Chairman  
Yuma County Improvement District No. 09-03  
(Martinez Lake Resort Unit No. 1)

ATTEST:  
  
\_\_\_\_\_  
SUE S. REYNOLDS, Clerk of the Board

APPROVED AS TO FORM:  
JON R. SMITH, Yuma County Attorney  
  
\_\_\_\_\_  
EDWARD P. FEHELEY,  
Deputy County Attorney

**BEFORE THE BOARD OF DIRECTORS**

**OF**

**THE YUMA COUNTY IMPROVEMENT DISTRICT NO. 09-03  
(MARTINEZ LAKE RESORT UNIT #1)**

**IN THE MATTER OF THE CONVERSION**

**OF**

**A ROAD IMPROVEMENT AND  
MAINTENANCE DISTRICT KNOWN AS  
MARTINEZ LAKE RESORT UNIT #1  
COUNTY IMPROVEMENT DISTRICT  
NO. 09-03**

]  
]  
]  
]  
]  
]  
]  
]  
]  
]  
]

**ORDER CONVERTING TO A  
ROAD IMPROVEMENT AND  
MAINTENANCE DISTRICT**

An Order for the conversion of a County Improvement District under the provisions of A.R.S. ' 48-1081, et. seq., having come this day for hearing before the Board of Directors of Yuma County Improvement District No. 09-03 (Martinez Lake Resort Unit #1) of the County of Yuma, State of Arizona, which received no objection or protest for consideration during the time provided by law, and having been fully advised in the premises, the following findings are hereby made and declared by said Board:

1. Due and legal notice of the time and place of this hearing has been given for the time and in the manner required by law;

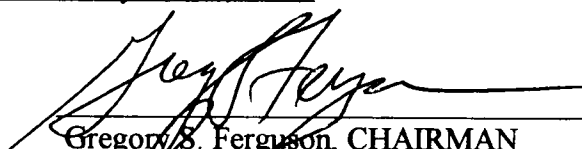
2. That the Resolution ordering the conversion of the District is signed by the Chairman of the District and that the Resolution is in all respects legally sufficient to cause the District to be converted and become the successor in interest of the former county improvement district and succeed to all rights, privileges and powers of the former district with full rights to collect any debt, liability, obligation or assessment owed to the former county improvement district and to levy assessments, issue bonds and levy and collect taxes for the payment of the general obligations of the district.

3. IT IS THEREFORE ORDERED that said Road Improvement and Maintenance District be and the same is hereby, converted; that the boundaries thereof are hereby established to include the real property previously established as the former county improvement district and more specifically described as follows:

EXHIBITS 'A' AND 'B'  
ATTACHED HERETO AND BY THIS REFERENCE MADE A PART HEREOF

And that said Improvement District is hereby declared converted under the corporate name of **MARTINEZ LAKE RESORT UNIT #1 COUNTY IMPROVEMENT DISTRICT NO. 09-03** by which name it shall be known in all proceedings; that said Road Improvement and Maintenance District shall be a body corporate, with the powers of a municipal corporation, for the purpose of carrying out the provisions of the law relating to Road Improvement and Maintenance Districts.

DONE THIS 6th DAY OF July, 2009.



Gregory S. Ferguson, CHAIRMAN  
YUMA COUNTY IMPROVEMENT DISTRICT NO. 09-03  
(MARTINEZ LAKE RESORT UNIT #1)

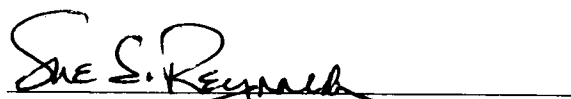
ATTEST:

  
Sue S. Reynolds, Clerk of the Board

CERTIFICATE

I, Sue S. Reynolds, the duly appointed and qualified Clerk of the Board of Supervisors of Yuma County, Arizona, do hereby certify the within and foregoing to be a full, true and correct copy of an Order Converting a Road Improvement and Maintenance District to be known as **MARTINEZ LAKE RESORT UNIT #1 COUNTY IMPROVEMENT DISTRICT NO. 09-03** duly adopted by said Board of Directors at a Board of Director's Meeting held on the 6th day of July, 2009, in the office of the Board of Directors and the same appears of record and on file in the minutes of said Board of Directors.

WITNESS my hand and the seal of the said Board of Directors this 6th day of July, 2009.

  
Sue S. Reynolds, Clerk of the Board

**EXHIBIT 'A'**

**(Legal Description of District Boundary for Martinez Lake Resort Unit No. 1 County Improvement District)**

A part of Lot 3 of Section 19, Township 5 South, Range 21 West of the Gila and Salt River Base and Meridian, Yuma County, Arizona.

Beginning at the 1935 Brass Cap being a point South 00 degrees 05 minutes 00 seconds East 749.75 feet from the Center quarter corner on the North South mid-section line of said Section 19;  
Thence South 00 degrees 05 minutes 00 seconds East a distance of 255.81 feet along the North South mid-section line to the TRUE POINT OF BEGINNING;  
Thence continuing South 00 degrees 05 minutes 00 seconds East a distance of 314.26 feet (M)  
314.15 feet (R);  
Thence North 89 degrees 59 minutes 39 seconds West a distance of 1,149.87 feet;  
Thence North 03 degrees 32 minutes 17 seconds West a distance of 55.22 feet;  
Thence North 18 degrees 09 minutes 10 seconds West a distance of 63.03 feet;  
Thence North 47 degrees 37 minutes 55 seconds East a distance of 66.04 feet;  
Thence North 05 degrees 30 minutes 00 seconds West a distance of 108.10 feet;  
Thence North 89 degrees 49 minutes 00 seconds West a distance of 46.41 feet;  
Thence North 00 degrees 11 minutes 00 seconds East a distance of 157.00 feet;  
Thence North 18 degrees 22 minutes 00 seconds East a distance of 59.84 feet;  
Thence North 00 degrees 39 minutes 00 seconds East a distance of 43.31 feet;  
Thence North 29 degrees 45 minutes 00 seconds West a distance of 104.80 feet;  
Thence North 01 degrees 15 minutes 00 seconds West a distance of 55.14 feet;  
Thence North 09 degrees 13 minutes 13 seconds East a distance of 75.00 feet;  
Thence North 67 degrees 11 minutes 14 seconds East a distance of 74.64 feet;  
Thence North 49 degrees 36 minutes 34 seconds East a distance of 90.50 feet;  
Thence North 18 degrees 00 minutes 10 seconds East a distance of 50.06 feet;  
Thence North 05 degrees 38 minutes 04 seconds East a distance of 18.96 feet;  
Thence North 35 degrees 08 minutes 58 seconds East a distance of 144.90 feet;  
Thence North 05 degrees 16 minutes 45 seconds East a distance of 65.54 feet;  
Thence North 53 degrees 27 minutes 51 seconds East a distance of 158.96 feet;  
Thence South 77 degrees 59 minutes 25 seconds East a distance of 87.75 feet;  
Thence South 02 degrees 51 minutes 55 seconds West a distance of 156.88 feet;  
Thence South 15 degrees 23 minutes 59 seconds West a distance of 19.61 feet;  
Thence South 62 degrees 40 minutes 10 seconds East a distance of 12.35 feet;  
Thence South 83 degrees 57 minutes 40 seconds East a distance of 38.46 feet;  
Thence North 73 degrees 18 minutes 18 seconds East a distance of 42.30 feet;  
Thence North 28 degrees 40 minutes 19 seconds East a distance of 15.00 feet;  
Thence South 80 degrees 06 minutes 00 seconds East a distance of 56.54 feet;  
Thence South 22 degrees 24 minutes 00 seconds West a distance of 138.32 feet;  
Thence South 88 degrees 34 minutes 04 seconds East a distance of 18.81 feet;  
Thence South 29 degrees 03 minutes 53 seconds West a distance of 21.24 feet;

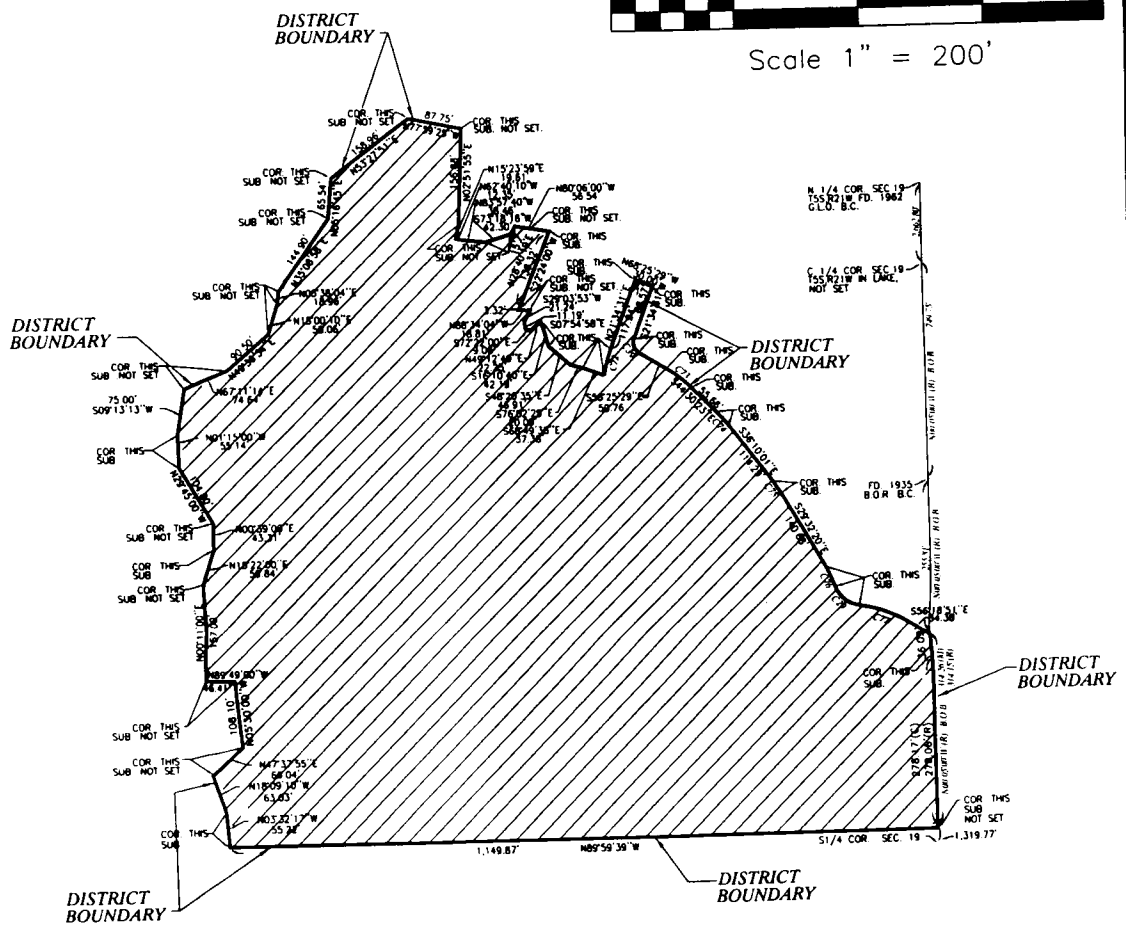
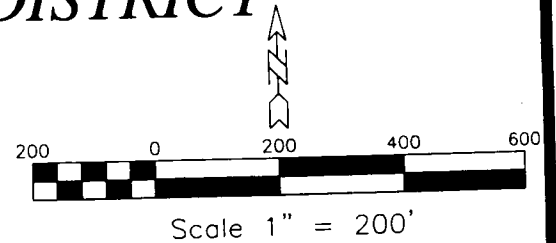
**Exhibit 'A' (Continued)**

Thence South 07 degrees 54 minutes 58 seconds East a distance of 11.19 feet;  
Thence South 72 degrees 22 minutes 00 seconds East a distance of 9.06 feet;  
Thence North 49 degrees 12 minutes 49 seconds East a distance of 22.25 feet;  
Thence South 16 degrees 10 minutes 40 seconds East a distance of 42.19 feet;  
Thence South 48 degrees 20 minutes 35 seconds East a distance of 46.91 feet;  
Thence South 76 degrees 02 minutes 25 seconds East a distance of 20.09 feet;  
Thence South 68 degrees 49 minutes 38 seconds East a distance of 37.38 feet to the beginning of a non-tangent curve to the right having a local tangent bearing of North 09 degrees 32 minutes 06 seconds East and a radius of 215.00 feet and a delta angle to 12 degrees 02 minutes 25 seconds;  
Thence along said curve for an arc distance of 45.18 feet;  
Thence North 21 degrees 34 minutes 31 seconds East a distance of 117.94 feet;  
Thence South 68 degrees 25 minutes 29 seconds East a distance of 30.00 feet;  
Thence South 21 degrees 34 minutes 31 seconds West a distance of 88.57 feet to the beginning of a tangent curve to the left having a radius of 20.00 feet and a delta angle of 80 degrees 00 minutes 00 seconds;  
Thence along said curve for an arc distance of 27.93 feet;  
Thence South 58 degrees 25 minutes 29 seconds East a distance of 50.76 feet to the beginning of a tangent curve to the right having a radius of 215.00 feet and a delta angle of 13 degrees 55 minutes 06 seconds;  
Thence along said curve for an arc distance of 52.23 feet;  
Thence South 44 degrees 30 minutes 23 seconds East a distance of 55.66 feet to the beginning of a tangent curve to the right having a radius of 215.00 feet and a delta angle of 08 degrees 20 minutes 22 seconds;  
Thence along said curve for an arc distance of 31.29 feet;  
Thence South 36 degrees 10 minutes 01 seconds East a distance of 114.29 feet to the beginning of a tangent curve to the right having a radius of 215.00 feet and a delta angle of 06 degrees 37 minutes 41 seconds;  
Thence along said curve for an arc distance of 24.87 feet;  
Thence South 29 degrees 32 minutes 20 seconds East a distance of 140.68 feet to the beginning of a tangent curve to the right having a radius of 215.00 feet and a delta angle of 09 degrees 12 minutes 21 seconds;  
Thence along said curve for an arc distance of 34.54 feet to the beginning of a tangent curve to the left having a radius of 50 feet and a delta angle of 60 degrees 38 minutes 32 seconds;  
Thence along said curve for an arc distance of 52.92 feet to the beginning of a tangent curve to the right having a radius of 215.00 feet and a delta angle of 24 degrees 39 minutes 40 seconds;  
Thence along said curve for an arc distance of 92.54 feet;  
Thence South 56 degrees 18 minutes 51 seconds East a distance of 34.38 feet to the TRUE POINT OF BEGINNING.

Containing 21.2735 acres, more or less.

# Exhibit "B"

## DISTRICT BOUNDARY MAP FOR MARTINEZ LAKE RESORT UNIT NO. 1 IMPROVEMENT DISTRICT



### CURVE DATA

NUMBER	DELTA	TANGENT	RADIUS	LENGTH
C29	60°38'32"	29.24'	50.00'	52.92'
C39	80°00'00"	16.78'	20.00'	27.93'
C72	12°02'25"	22.67'	215.00'	45.18'
C73	13°55'06"	26.24'	215.00'	52.23'
C74	08°20'22"	15.67'	215.00'	31.29'
C75	06°37'41"	12.45'	215.00'	24.87'
C76	09°12'21"	17.31'	215.00'	34.54'
C77	24°39'40"	47.00'	215.00'	92.54'

**Jacobson Engineering**  
CIVIL ENGINEERS/PLANNERS/SURVEYORS  
1334 S. 5TH AVENUE, YUMA, ARIZONA 85364

JOB NO. 2098

DESIGN R.G.M.

SCALE 1"=200'

DATE